

16 Stylish
Country Villas

ELGON VIEW ELDORET



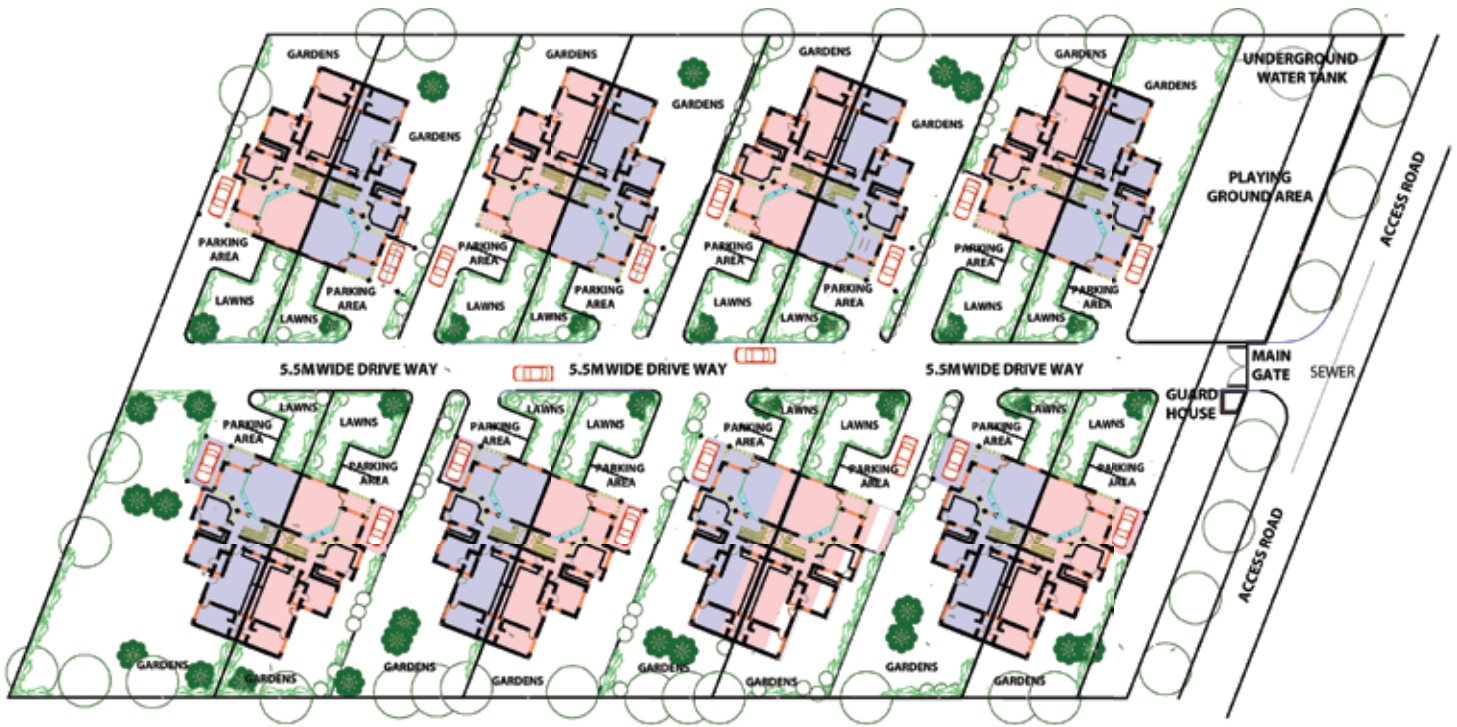
Tiara Gardens



- Elegant Country Villas
- Secure Wall & Electric Fence
- Serene Gated Community
- Comfortable Spacious Living on 3 Levels
- Guest Room, DSQ, Attic & Family Room
- Tasteful, Contemporary Design

Stylish, Contemporary, Country Living

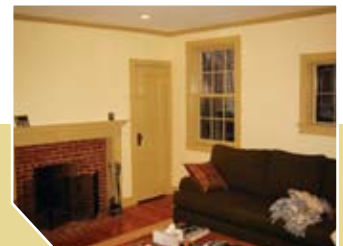
Site Plan of Tiara Gardens



Concept

Tiara Gardens is a stylish, contemporary, gated community located in the serene surroundings of Elgon View in Eldoret. The development consists of 16 high-end country villas in a fully secure compound with stone boundary wall, electric fence and single access point.

The houses are creatively conceptualized and lie on approximately a quarter of an acre of professionally landscaped gardens.



Each house is elegantly designed and tastefully finished with contemporary amenities to ensure enjoyable, convenient living and a high quality of life. The community is designed to bring to life the finer aspects of great country living and features well manicured gardens, a children's play area, and private patio for each family to enjoy.

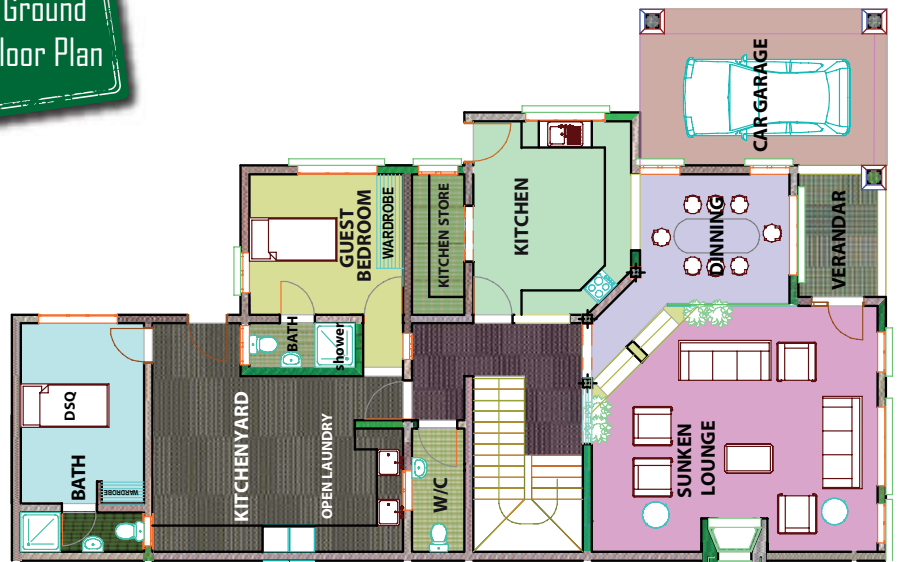
The contemporary design and facilities transforms each unit into a spacious and pleasant home in a serene, comfortable and secure community of unrivalled quality in Eldoret.

Highlights

Ground floor - 151.87m²

- Spacious Lounge
- Dining with access to the terrace
- Contemporary kitchen with pantry and kitchen yard
- Guest Bedroom
- Self contained DSQ
- Covered Car port and 2 additional parking bays

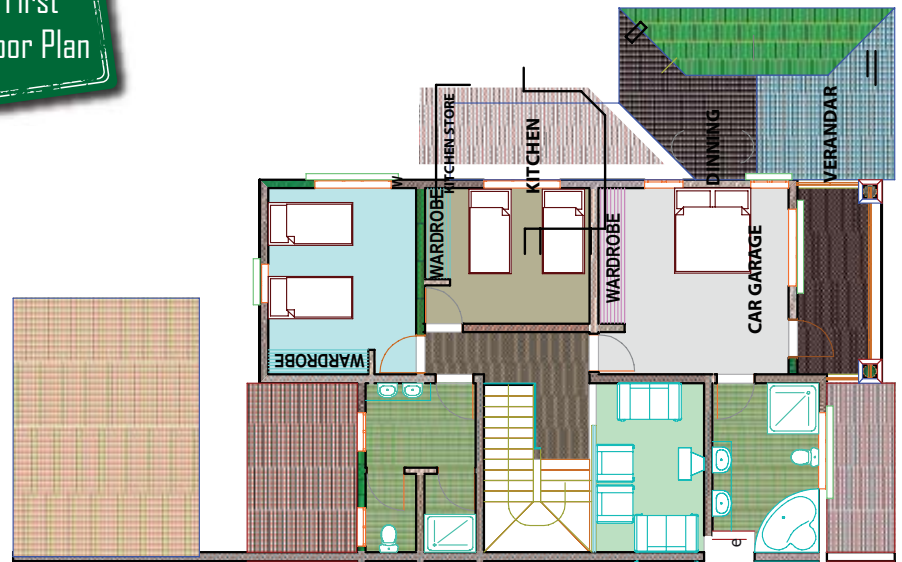
Ground Floor Plan



First Floor - 85.39m²

- Stylish Master bedroom ensuite with balcony
- Two bedrooms sharing shower and WC facilities
- Family / TV room

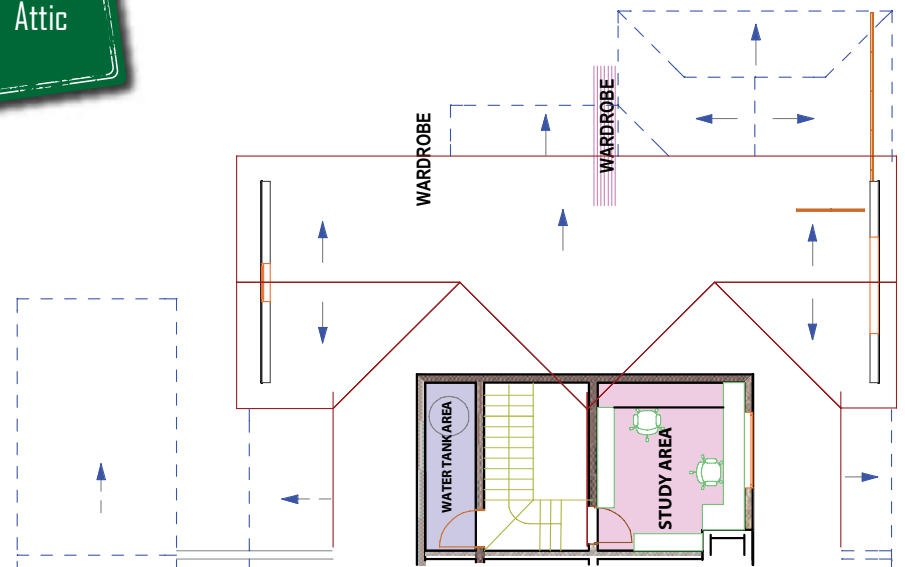
First Floor Plan



Attic Floor - 18.3m²

- Study area / Office
- Water tank area

Attic



Total - 255.56m²

Salient Features

- Well manicured gardens
- Boundary wall with electric fence and Guard House
- Ample underground water storage
- Cabro paving on driveway and parking

16 Stylish
Country Villas

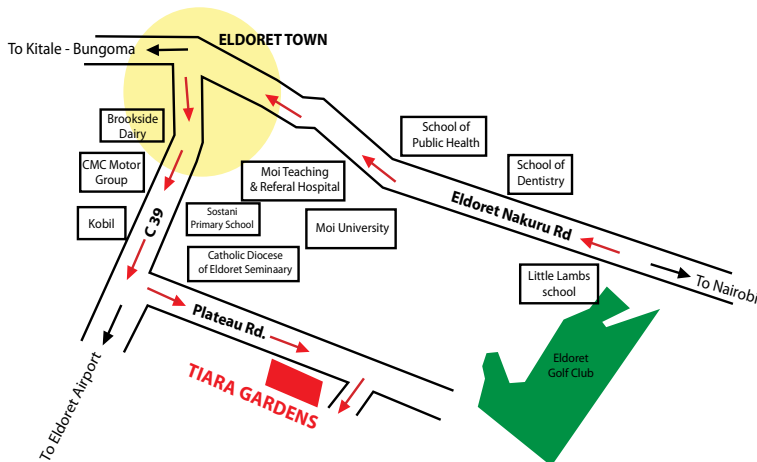
ON SALE BOOK NOW



Tiara Gardens



Eldoret Location



The development is located on Plateau Rd and is accessible through Kisumu Rd and the main Nairobi - Eldoret (Uganda Rd). The distance to the town center is 2.2km, and it is in close proximity to the Eldoret Golf Club, schools like Hill School and Testimony; Moi Referral Hospital, and Shopping Malls like Nakumatt.

Contacts & Selling Agents

TIARA HOMES

0720 880 099 / 0725 393 621 - Email: info@tiarahomes.net - www.tiaragardens.net

HIGHLAND VALUERS

2062186 / 2031089 / 0720 684 980 - Email: hvaluers@kenyaweb.com / highlands@africaonline.co.ke

PINNACLE PROJECTS

(020) 318756 / 57 / 58 - Email: info@pinnacleprojectsLtd.com - www.pinnacleprojectsLtd.com

Stylish, Contemporary, Country Living